

May 22th, 2025

90201-1603DEA

Kawasaki Heavy Industries, Ltd.

Robot Business Division

neoROSET Version 2.0.1 Release Notice

1 Release Information

1.1 Release Version

neoROSET Version 2.0.1

1.2 Release Summary

(1) Addition and improvement of functions

[Palletize Configurator]

Palletize Configurator has been added as an optional function.

[Update period notification function]

A function to notify the update period was added.

[Enhanced view-related expressiveness]

Model representation and the display of light sources and shadows have been enhanced.

[Power Consumption]

The power consumption prediction function is now available for supported models and AS versions.

(2) Update controllers/robots/instructions to provide

There are no updates for this version.

(3) Resolved item

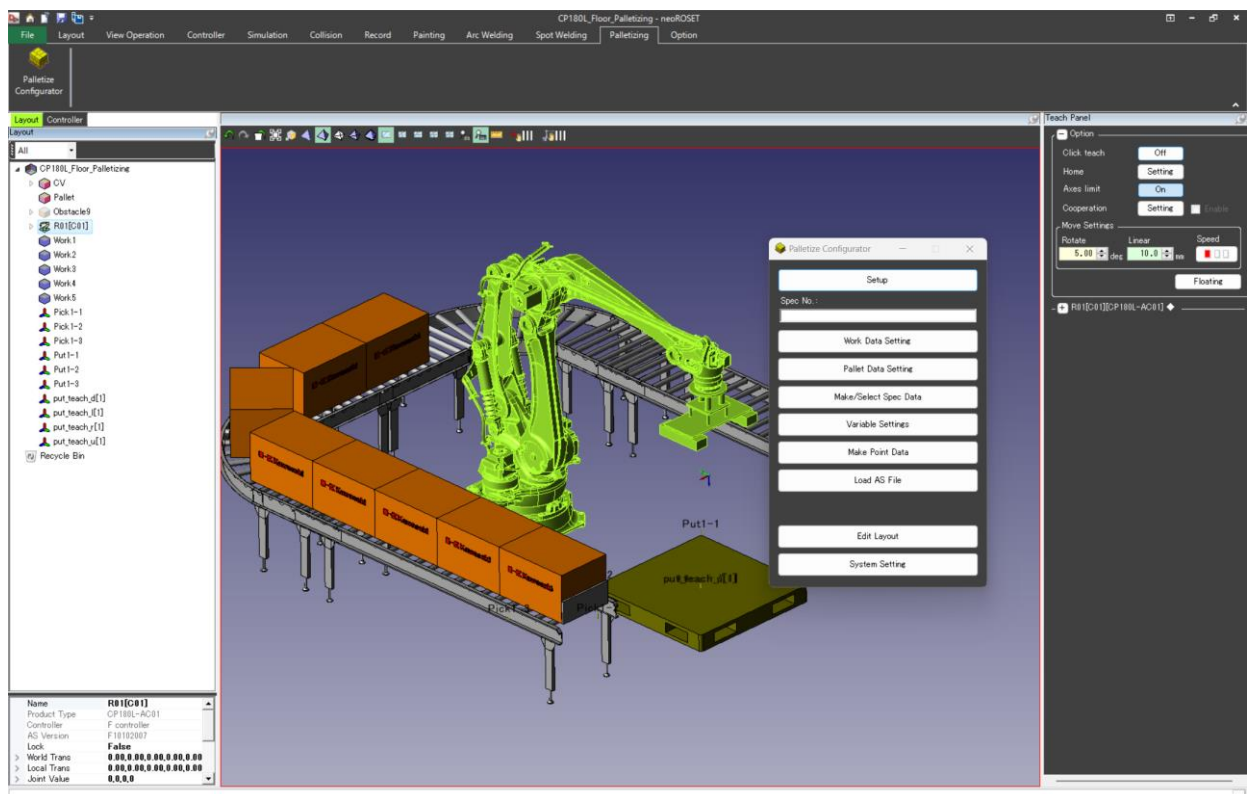
Improved and fixed some items.

2 Major Additions and Improvements

2.1 Palletize Configurator

A palletizing function (Palletized project creation support function, same as K-SPARC function of K-ROSET) has been added as an optional function. If you have purchased the option license Palletizing, Palletizing is added to the ribbon menu and Palletizing is available.

For details, refer to the enclosed manuals "90210-1535 neoROSET Palletize Configurator Robot Motion Manual" and "90210-1536 neoROSET Palletize Configurator Operation Manual"

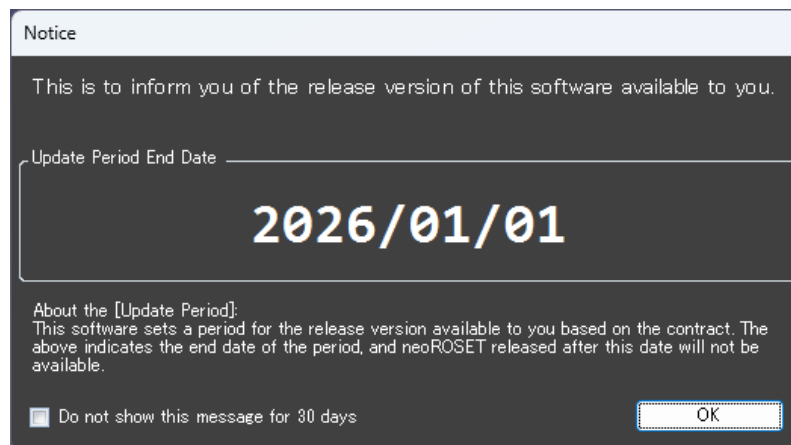


2.2 Update period notification function

A function to notify the update period was added.

Displays the update period notification window at each startup.

If you check "Do not show this message for 30 days" this window will not be displayed for 30 days.

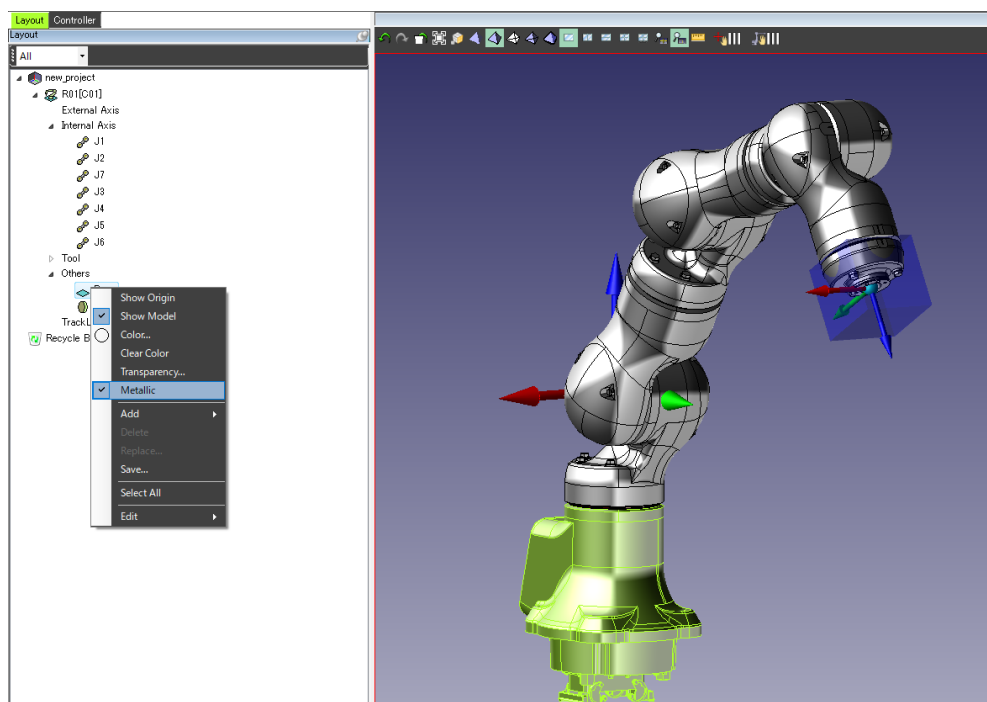


2.3 Enhanced view-related expressiveness

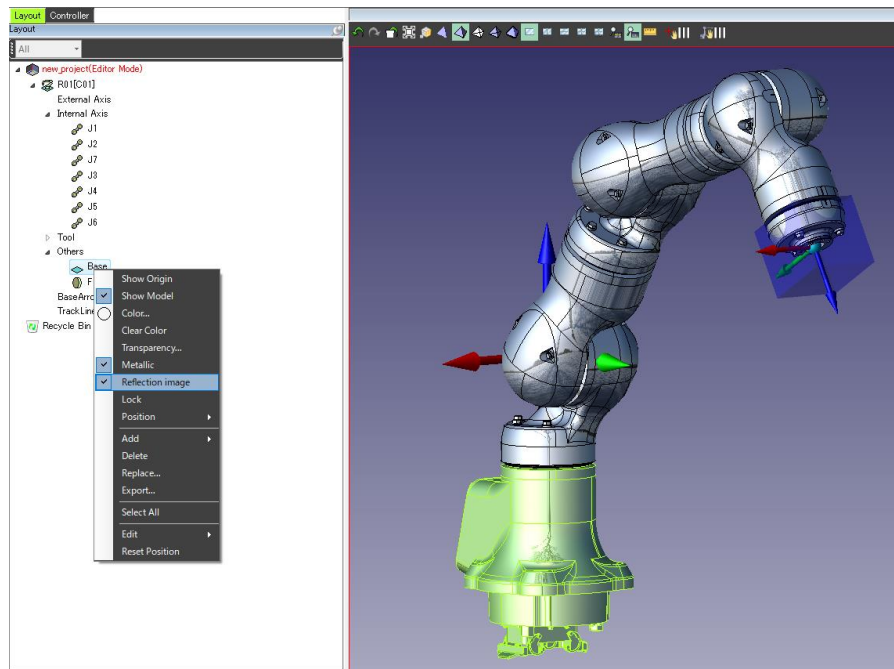
Model representation and the display of light sources and shadows have been enhanced.

- Metallic

You can turn a model into a metallic display by selecting [Metallic] from the Model context menu in the Layout Tree or View.

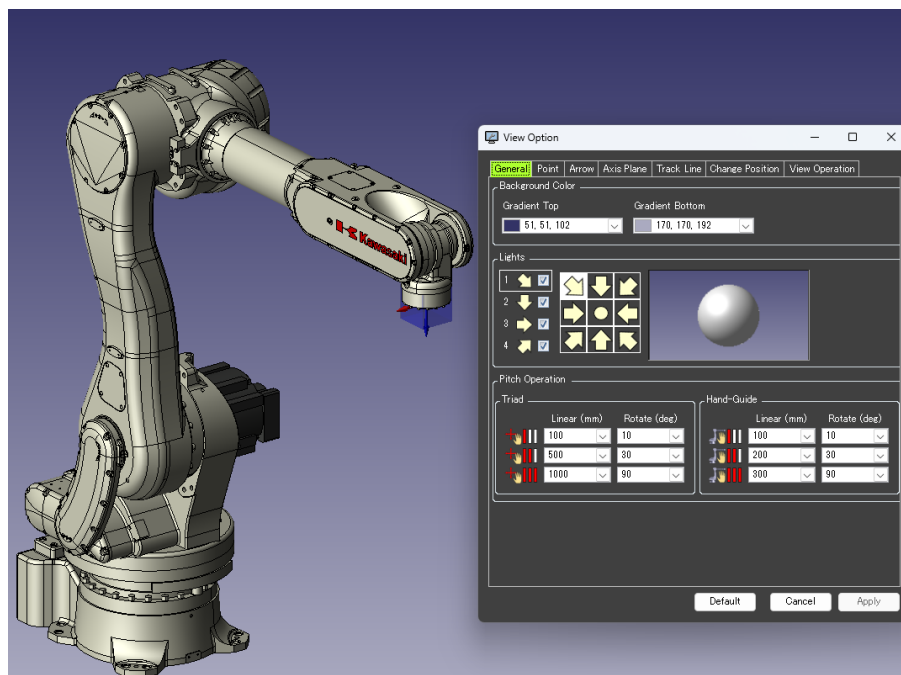


Also, by changing Layout Tree -> Project Context Menu -> [Settings] -> [Operation Mode] to Editor, you can specify any reflection image for the metallic display to make the metallic display more realistic.



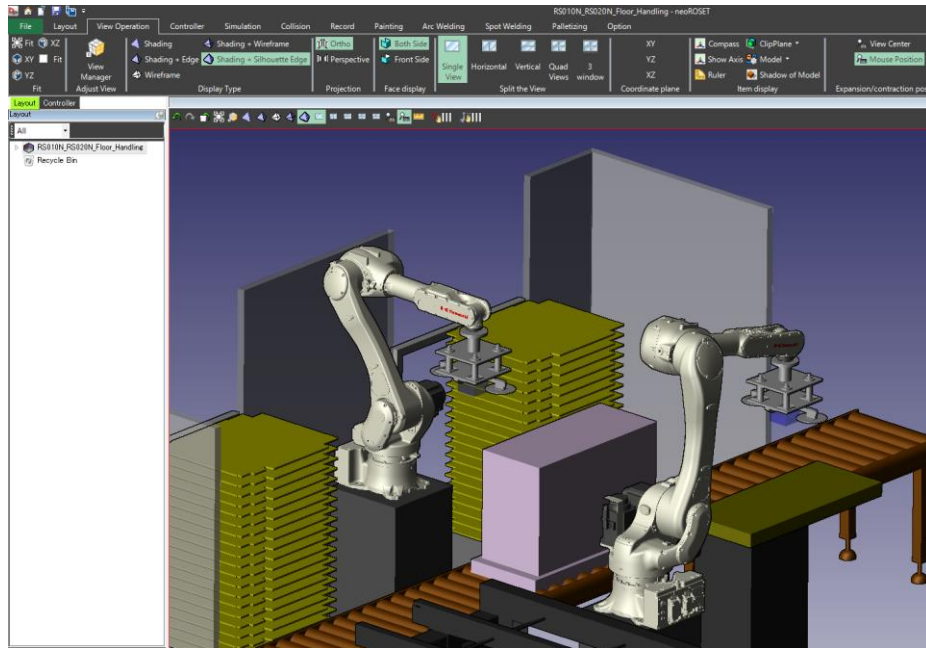
- Increase the number of light sources that can be set to four

The number of light sources that can be set has been increased to four. (available in [Option]-> [View Option])



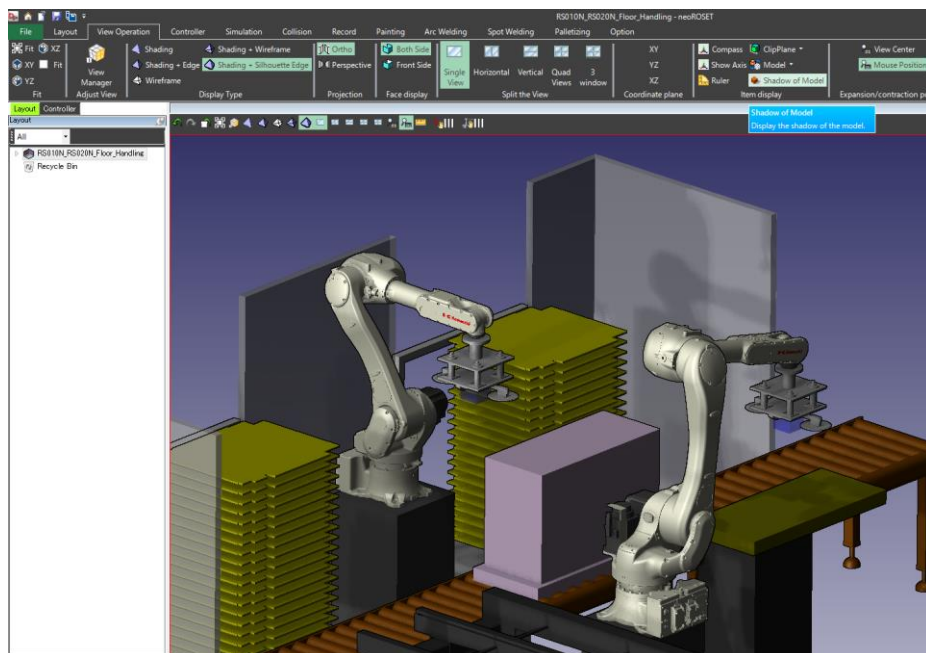
- Shading + Silhouette Edge

Added Shading + Silhouette Edge to the Display Type. (can be changed via [View Operation] -> [Display Type])



- Shadow of Model

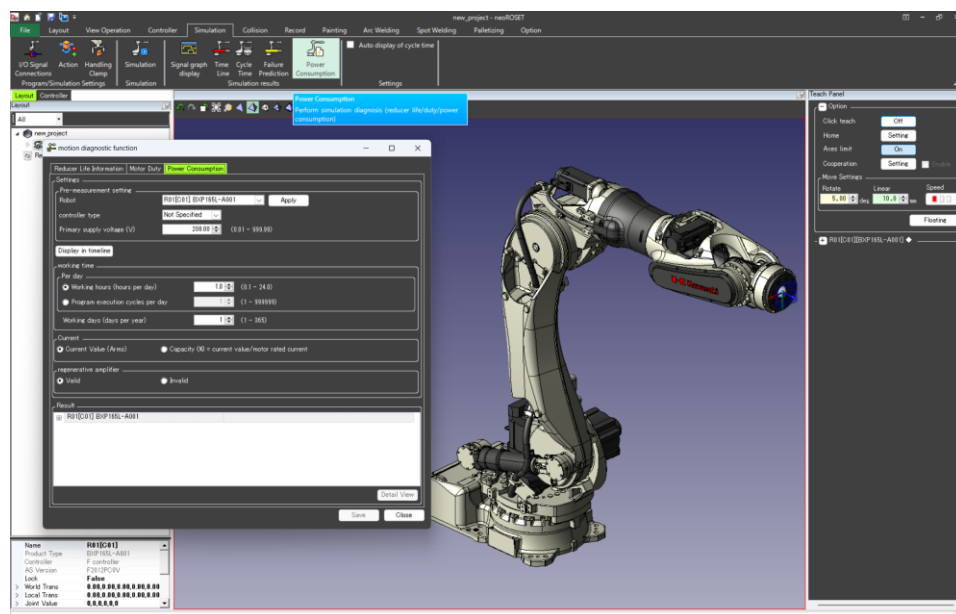
Added display of model shadows. (added via View Operation -> Item Display -> Shadow of Model)



2.4 Power Consumption

Power Consumption prediction function is available for supported models and AS versions.

Power consumption can be estimated by selecting the robot in [Simulation]->[Power Consumption] and entering various parameters.



Supported models and AS versions are as follows.

Application	Controller	Series	Model	AS Version
Servo Welding Gun	F controller	BX Series	BX165L-C501	F2012PC0V
			BX165N-C001	
			BX200L-C001	
			BX200X-C001	
		BT Series	BT200L-A001	
		BXP Series	BXP165L-A001	
			BXP210L-A001	
		BTP Series	BTP165L-A001	
			BTP210L-A001	

3 Supplied Controllers/Robots/instructions

The updated controllers/robots/instructions in this release are as follows.

For all the controllers/robots/instructions provided by neoROSET, see Appendix in Operation Manual.

3.1 Controller Library

There is no controller library update.

3.2 Robot Library

There is no robot library update.

3.3 Instruction

There is no instruction update.

4 Resolved Items

The following items are resolved in this release:

- An error occurs when playing a program from Quick Builder.
- Add Camera item to Quick Builder.
- Camera view is fixed as Shading + Edge.
- The last selected robot cannot be memorized on the robot load window.
- Display the maximum transportable mass and maximum reach on the robot load window.
- The number of significant digits of numerical value in offset/arrangement in the plural work/obstacle creation window was small.
- Roll does not rotate in X axis when upper or specified model is selected in position change window.
- Adding 3~5 D controllers/D+ controllers may cause the controller to freeze.
- Collision distance may be ignored when replacing a model.
- After moving to the posture at the time of collision in the Collision Log, if you change the posture with 1HOME on the teaching panel, the collision plane remains.
- Saving may fail after syntax check in AS editor.
- Error log when robot of servo weld gun is deleted.
- The issue where the 3DPDF feature was not outputting correctly.
- The controller file of the Paint C controller KE series has been updated. (Corrects the problem that the number of output/input signals is not saved.)

5 Precautions

The precautions when using the software is described below.

5.1 Installation

If you installed an older version of the software, uninstall it first.

Uninstalling does not erase your created data.

5.2 Operating Environment

See "90210 -1515 neoROSET Operation Manual Chapter 2.1" for operating environment.

5.3 License

neoROSET requires license activation.

You cannot start neoROSET without a license.

For details about the license, see "90210 -1515 neoROSET Operation Manual 2.3 License."

5.4 Others

For other restrictions, see "neoROSET Operation Manual Chapter 8.3 Overall neoROSET Restrictions".